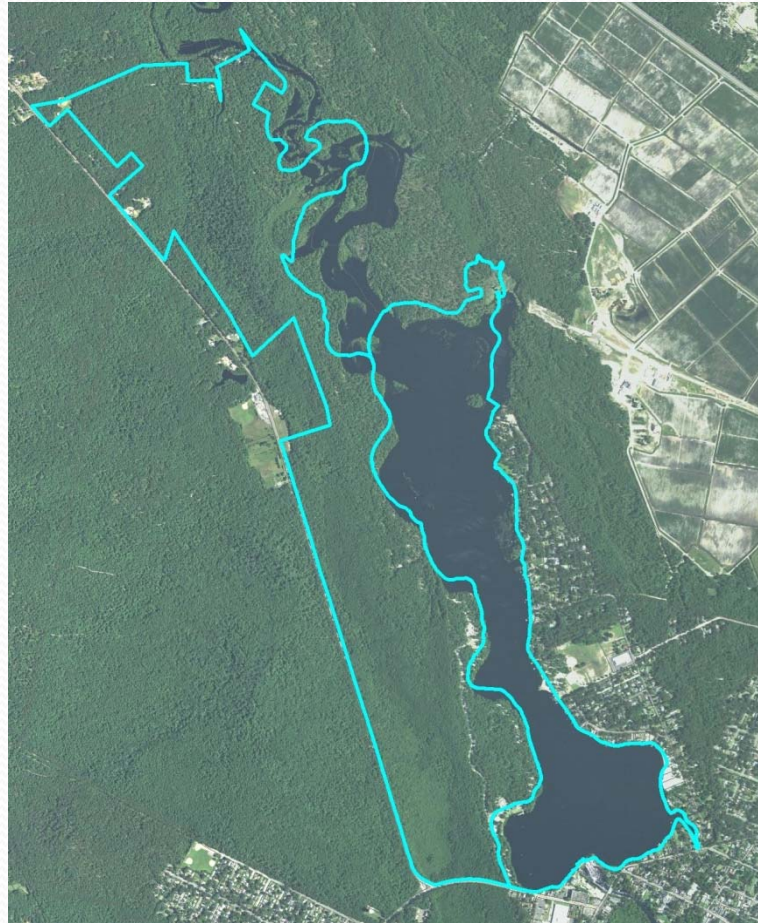
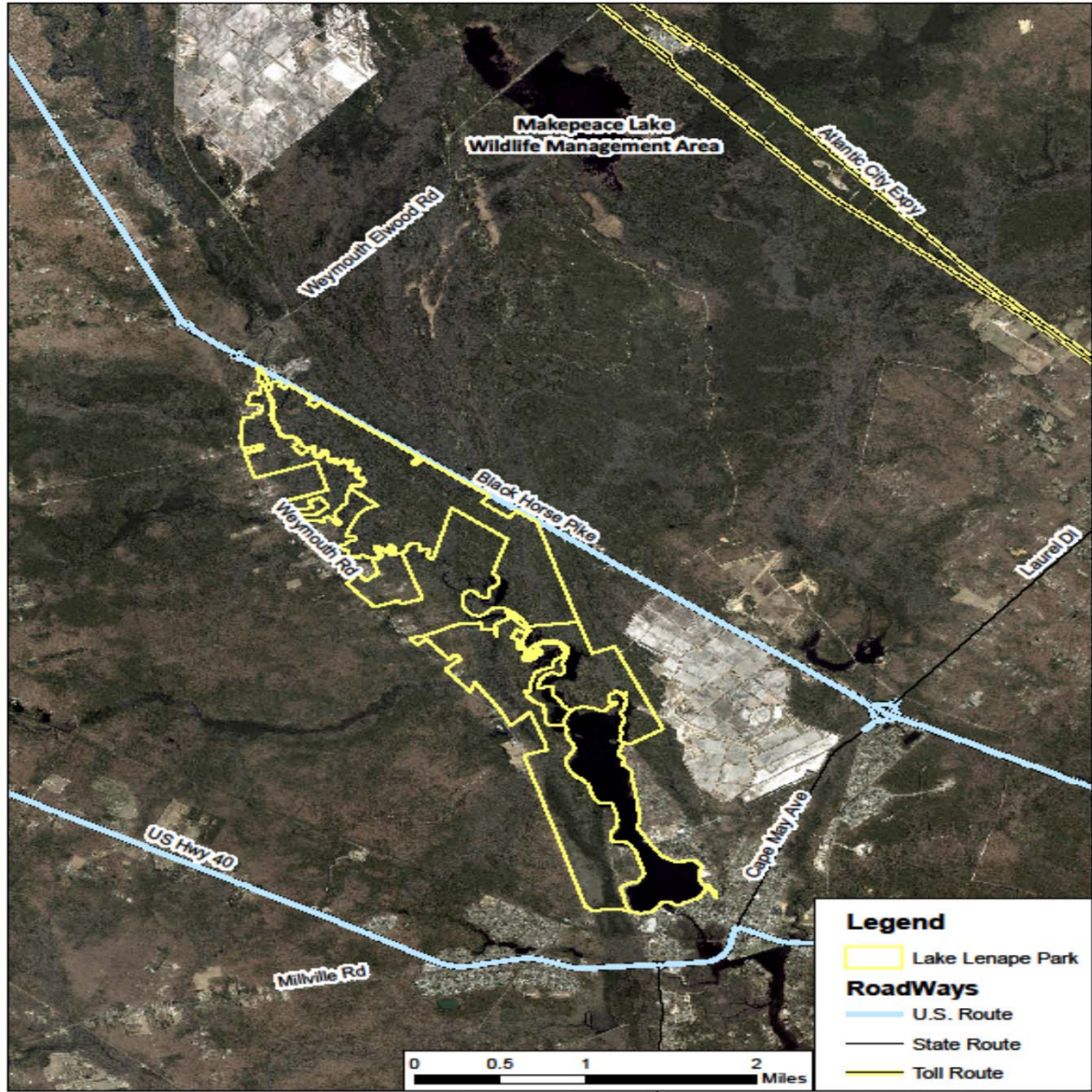


Atlantic County Park at Lake Lenape

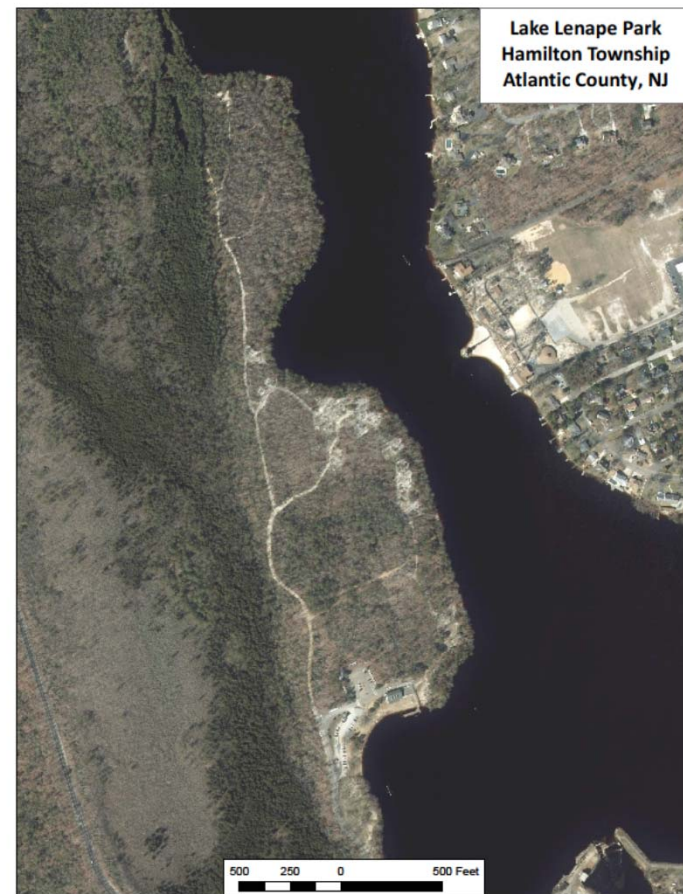


P&I Committee
Meeting
August 23, 2019



Atlantic County Park at Lake Lenape

- Consists of Approximately 1,898 Acres
- In March 1998, County Executed an MOA with the Pinelands Commission for Certain Development Projects at the Park.
- As part of that MOA, limited development to 76 acres
- Deed Restricted the Remainder

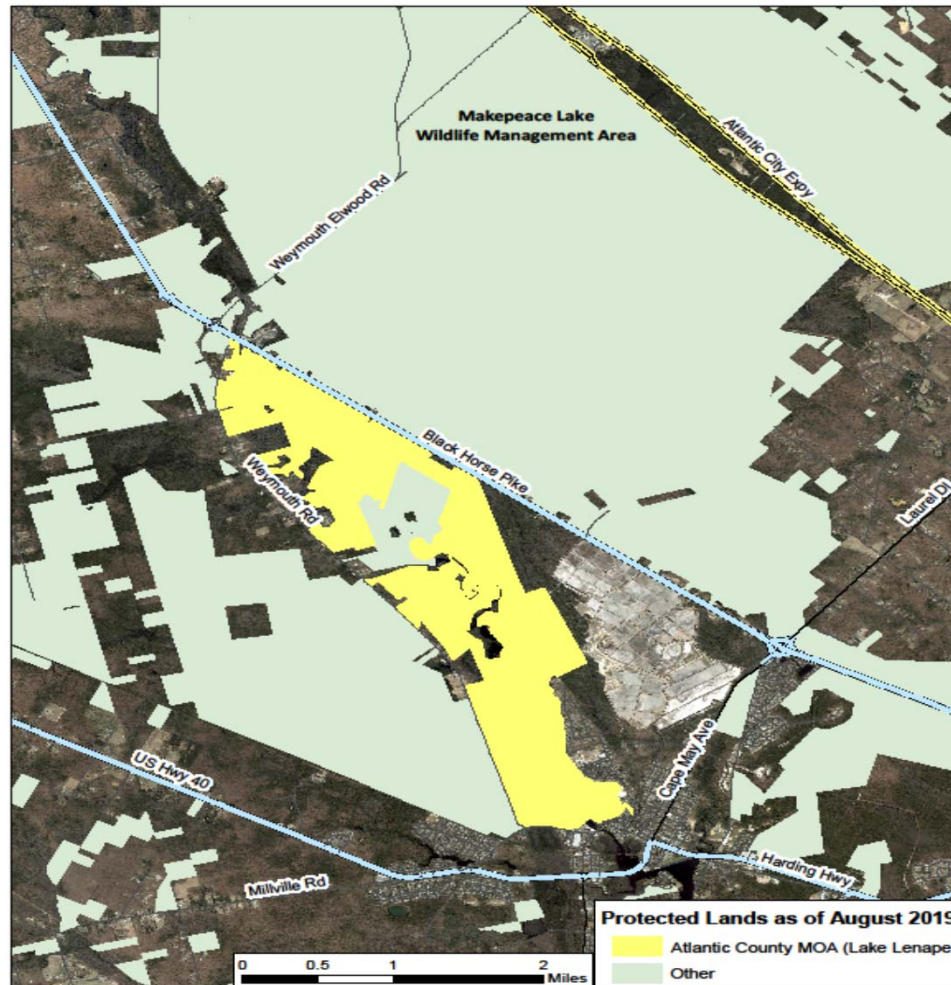




1998 Memorandum of Agreement

- Deviation/Alternate Permitting Process MOA
 - Purpose – Permit Certain Development within Atlantic County Park at Lake Lenape
- Deviation MOA
 - Wetland Buffer Requirement
 - Centralized Waste Water Treatment and Collection Facilities in a Forest Area

Deed Restricted Portions of Atlantic County Park at Lake Lenape





1998 Memorandum of Agreement

- Permitted Development in Four Areas:
 - The Western Lakeshore Area (\approx 35 acres)
 - Existing Group Camping Area (\approx 29 acres)
 - Existing Camping Area and Canoe Launch (\approx 12 acres)
 - Existing and Proposed Trails